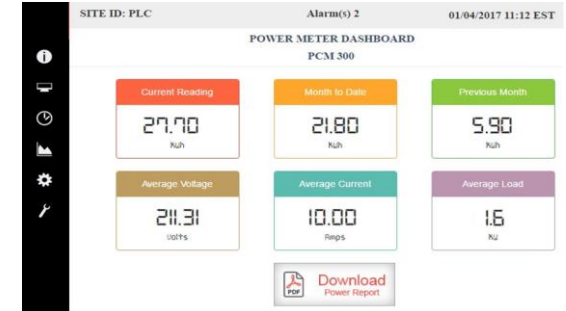
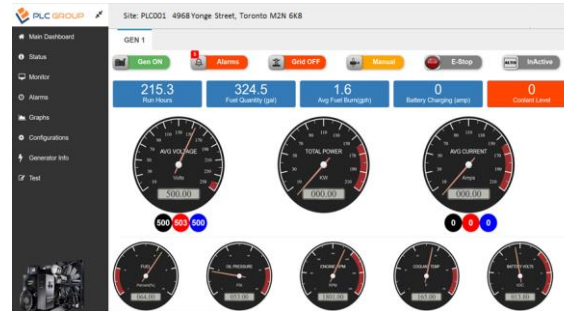


## Hardware Specifications:



CPU	ARM Cortex-A7™ Quad-core
Storage	2GB Industrial Grade
Network	1xEthernet RJ45 10/100M (Optional 4 Ports), WiFi
Power	18 to 72VDC- 500mA
USB	3x USB Serial Ports for Modbus/Serial connections
Sensor Ports	3xRJ45 Sensor Ports for Temp, Humidity, Airflow sensors
Alarm Ports	2xRJ45 for 4xAlarms Contacts
Peripherals	I/O for UART, I2C, SPI, ADC, PWM, CAN, I2S, SPDIF, LRADC
Size(mm)	125x40x125 (LxWxH) Wall Mount
Weight	250gm

## Software Specifications:



- Modbus TCP/RTU communication with 3<sup>rd</sup> Party controllers
- Linux Operating System
- IPv4 and IPv6 capable
- SNMP version 1, 2 Device Management
- Alarms configuration & reporting
- Analog/Digital Sensors data collection
- Data aggregation over wired/wireless WiFi network
- Performance parameters summary on graph and over SNMP.
- Remote bulk data collection over http
- GUI interface for configuration
- Remote software upgrade
- Auto configuration backup over FTP
- Local data storage up to 3 years
- Real time & Historical Alarms logging
- CSV log file export for Alarms & parameters
- Real time active graphs for user defined intervals
- System clock with configurable NTP server
- Multi level user access
- User and Admin authorization levels for read only and read write access

