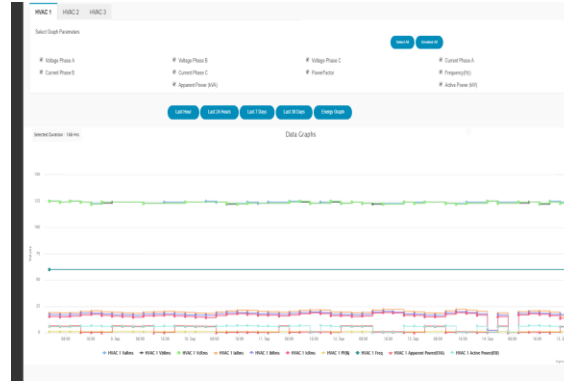


Hardware Specifications:



CPU	ARM Cortex-A7™ Quad-core
GPU	ARM Mali-400 GPU
Memory	2GB DDR3 SD RAM
Storage	8G eMMC flash (option 16/32/64G)
Measurement:	5x 3-Phase Energy Monitoring
Network	Ethernet RJ45 10/100/1000M WIFI & Bluetooth 4.0 with 802.11BGN onboard
USB	2xUSB 2.0 RS232/RS485 Modbus
Power	90-240VAC (Optional DC Power)
Peripherals	I/O Pins for UART, I2C, SPI, ADC, PWM, CAN, I2S, SPDIF, LRADC
Box Size(mm)	External: 500 x 399 x 158 (LxWxH)
Weight	7.5Kg
Touch Display	Optional LCD/RGB 5"

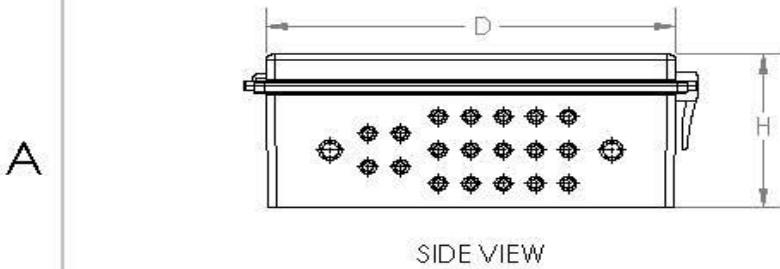
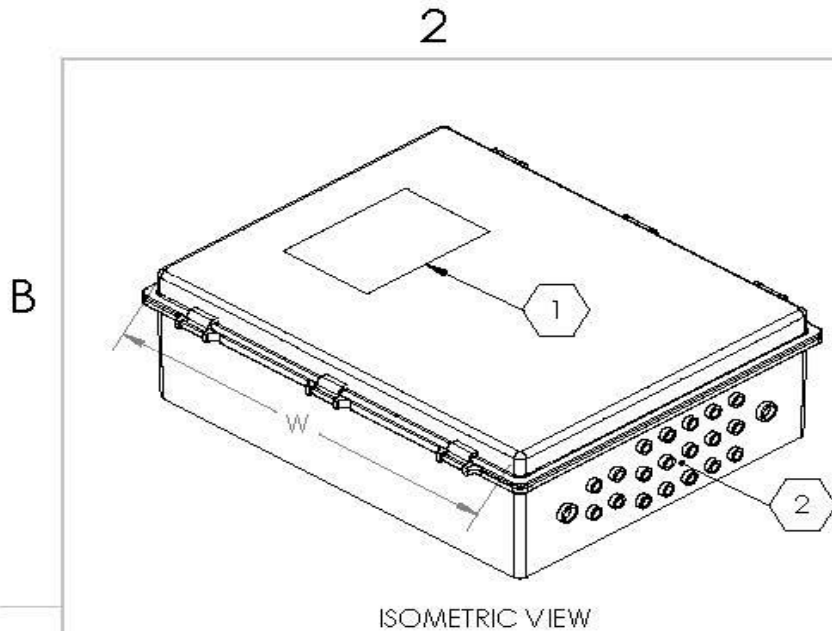
Software Specifications:



- Built in web based GUI/Dashboard for remote monitoring and reporting
- Real time energy monitoring over Modbus serial/TCP/SSL
- IPv4 and IPv6 & SNMP Based Device Management v1, v2c and v3 supported.
- Primary and secondary trap servers configurations for redundancy.
- Alarms configuration & reporting
- User defined read-only and read-write community for SNMP and web GUI
- Performance parameters summary on graph and over SNMP
- Real time active graphs for user defined intervals



- Real time & historical alarms & data logging, reporting, energy consumption graphs, temperature & humidity (optional)
- Internal RTC and configurable NTP option
- Remote bulk data collection, bulk upgrade over http GUI interface
- Historical reports, CSV log file export for Alarms & parameters up to 3 years
- Optional: Bulk device management with PLC RMP or 3rd Party Network Manager
- Hardware security enables trustzone security system, Digital Rights Management (DRM), information encryption/decryption, secure boot, secure JTAG and secure efuse



REFERENCE NOTES	
ITEM	DESCRIPTION
1	LCD Opening
2	Connectors for Current Transformer and Temperature/Humidity

PHYSICAL DIMENSIONS (inches)	
H	6.30
W	18.88
D	14.89

PROPRIETARY AND CONFIDENTIAL
 THE INFORMATION CONTAINED IN THIS DRAWING IS THE SOLE PROPERTY OF PLC Group. ANY REPRODUCTION IN PART OR AS A WHOLE WITHOUT THE WRITTEN PERMISSION OF PLC Group IS PROHIBITED.



SIZE	PRODUCT NAME
A	PCM-1400
SCALE: 1:6	SHEET 1 OF 1

2

1